



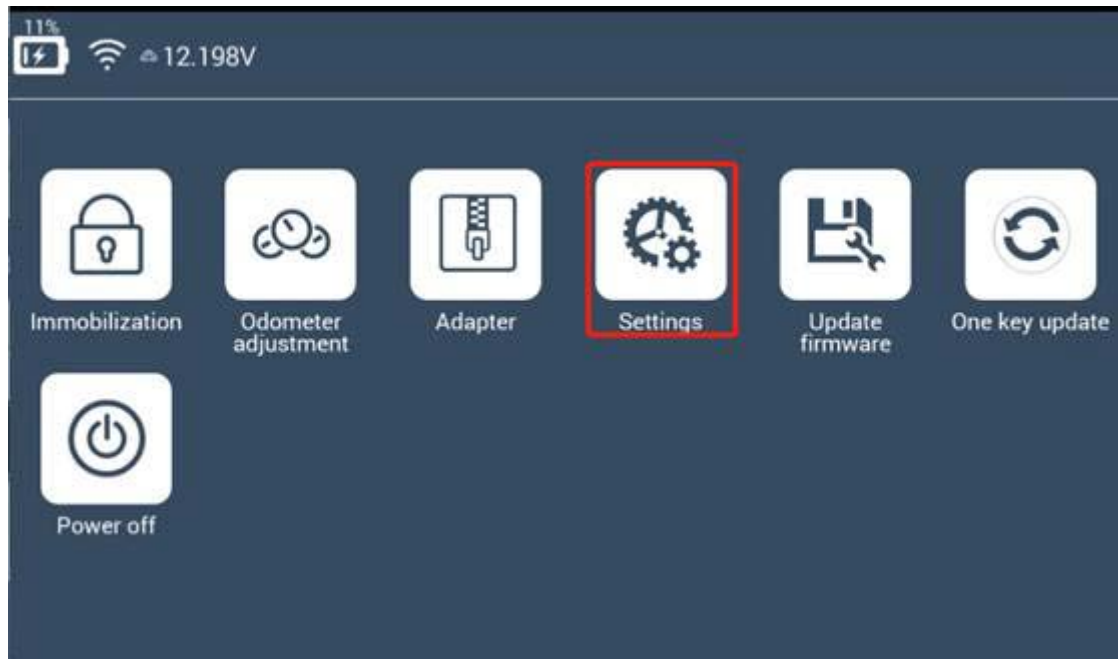
# LonsdorK518 Hex editor Instructions

# Contents

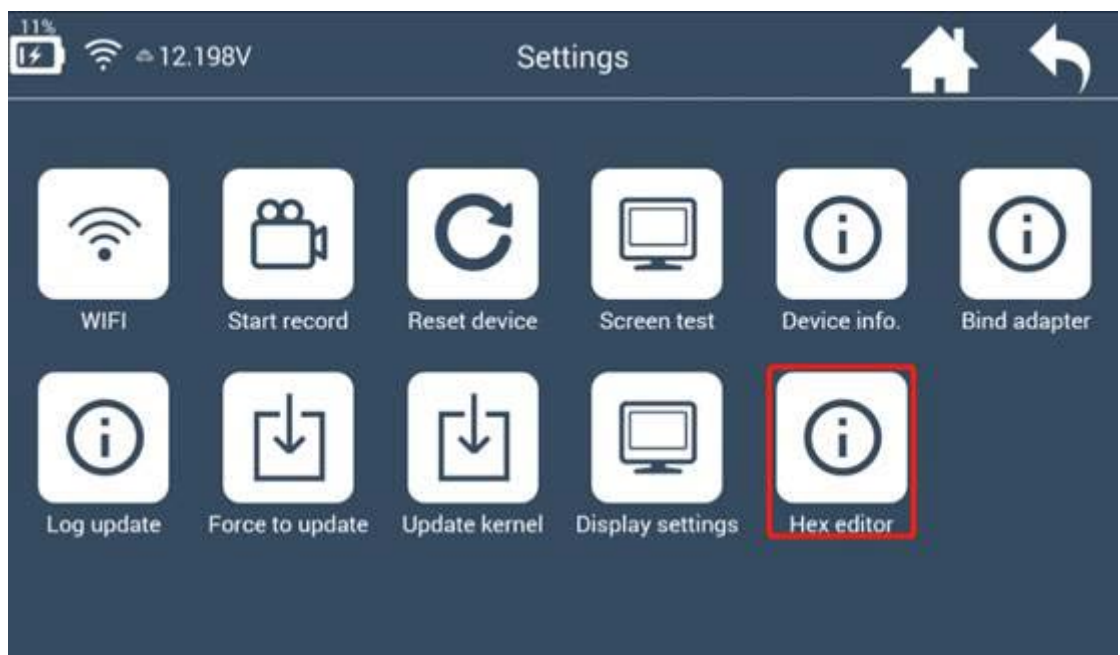
<b>Contents</b> .....	<b>2</b>
<b>1 Open Hex editor</b> .....	<b>3</b>
<b>2 Open file</b> .....	<b>4</b>
<b>3 Search data</b> .....	<b>5</b>
<b>4 Edit data</b> .....	<b>7</b>
<b>5 Save file</b> .....	<b>8</b>
<b>6 Calculator</b> .....	<b>9</b>

# 1 Open Hex editor

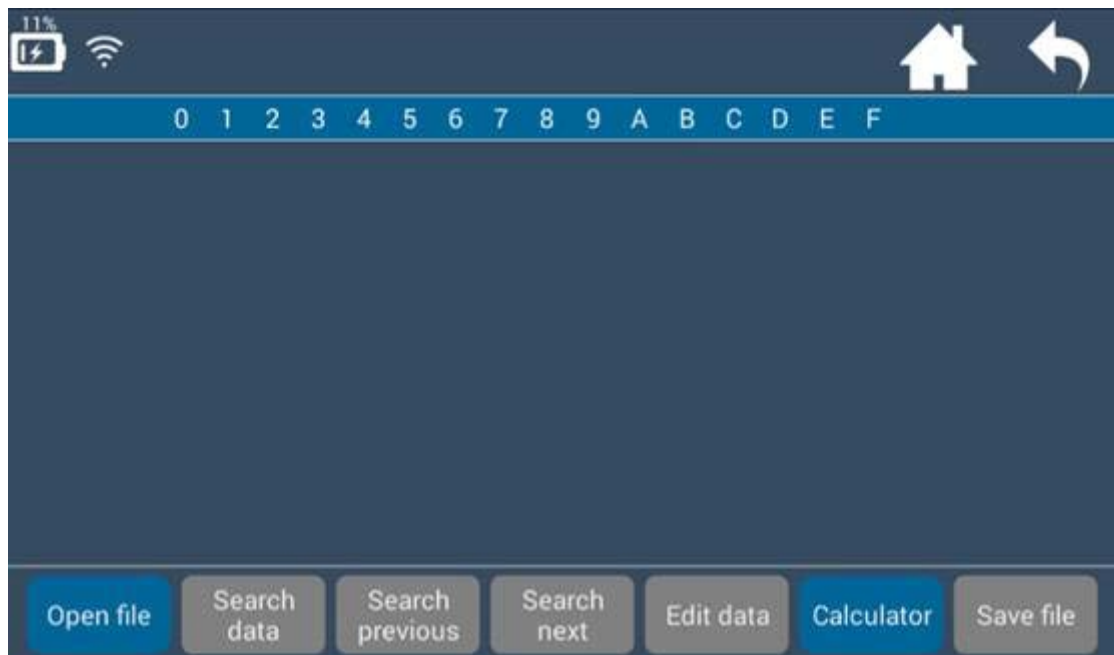
- ❖ Enter K518 home screen, select **【settings】** in below pic.



- ❖ In **【settings】** menu, select **【Hex editor】** in below pic.



- ❖ **【Hex editor】** interface as shown in below pic.



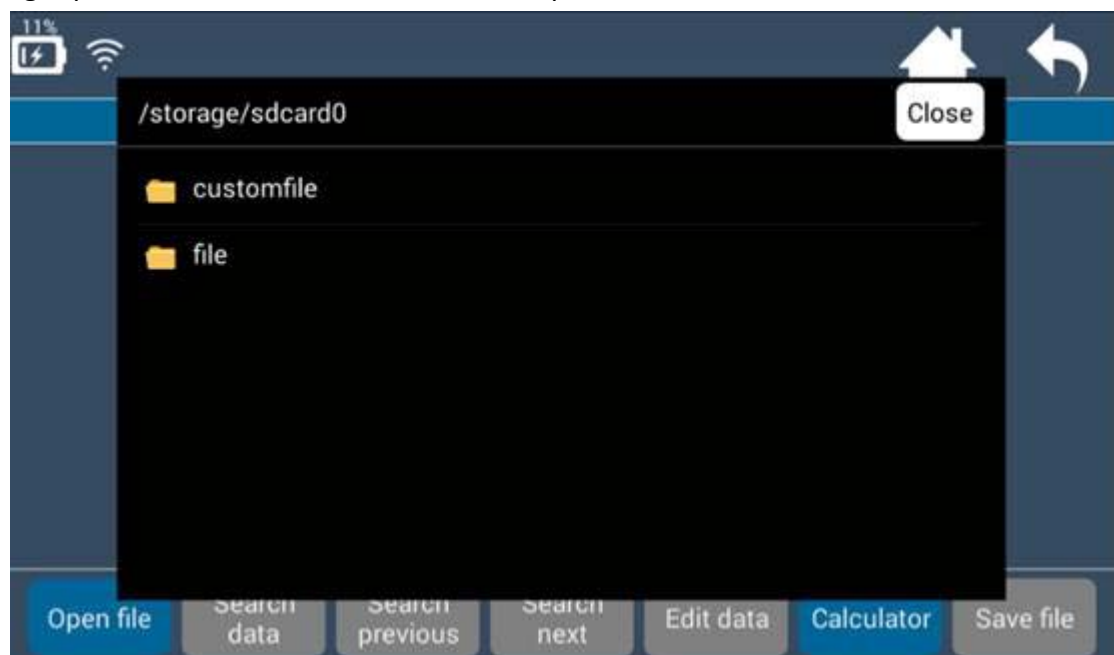
 Back to home screen

 Back to previous menu

## 2 Open file

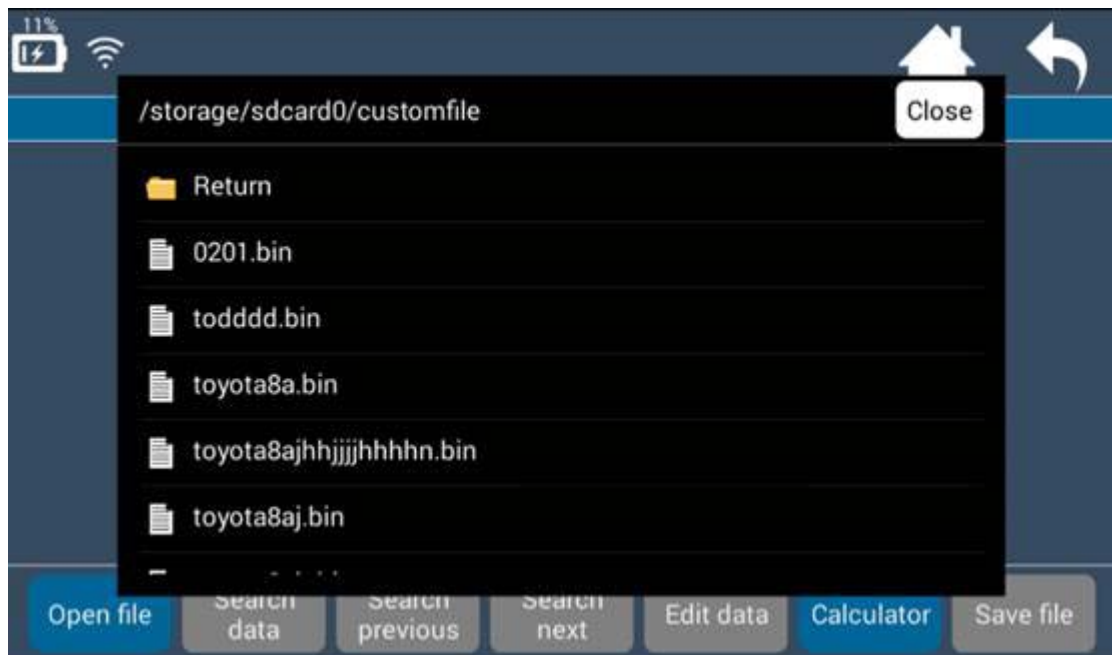
**【Hex editor】** interface: You can only click **【Open file】** and **【Calculator】**. Other grey buttons are unclickable when no file is read.

- ❖ Please open file first before further operations. Click **【Open file】** and select right path to store the file. Refer to below pics.

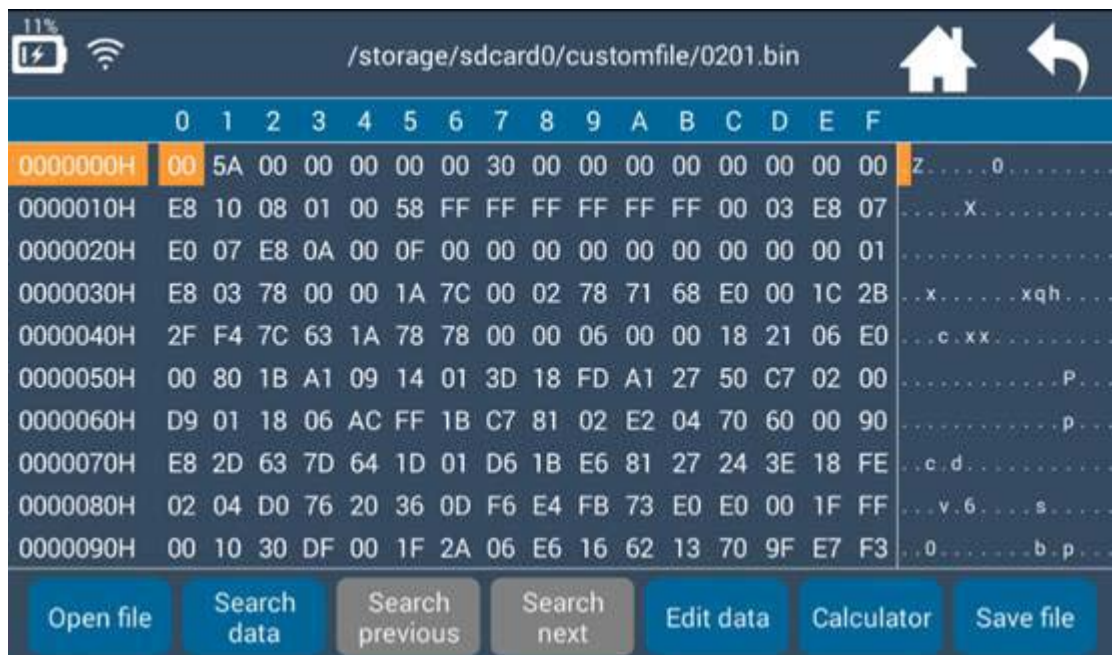


*customfile: Store user temporary data*

file: Store APP data

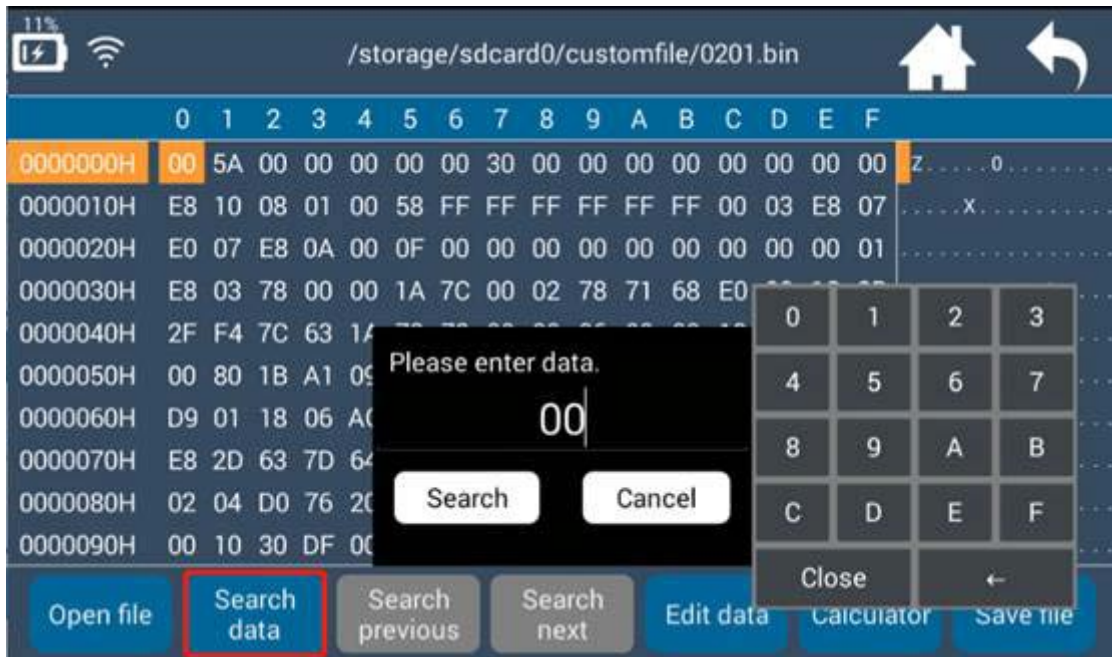


Select a bin file, opened as a Hex file as shown below.



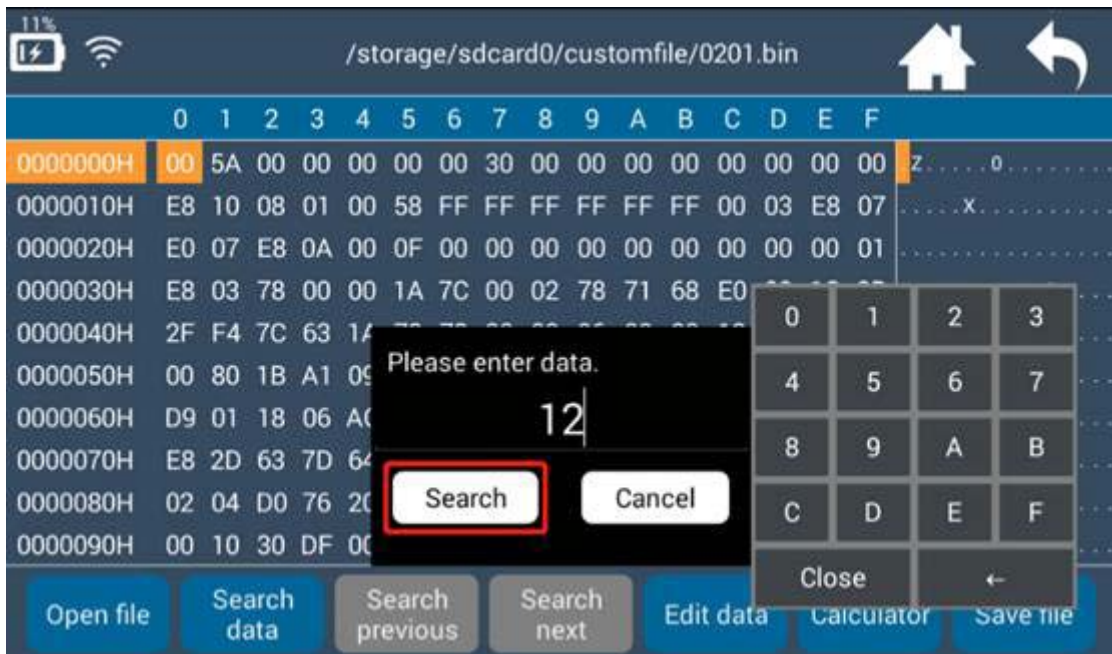
### 3 Search data

- ❖ Click **Search data**, and prompt "Please input data to be searched". Then input the data and click **Search**. Default values is on where the cursor is in below pic.



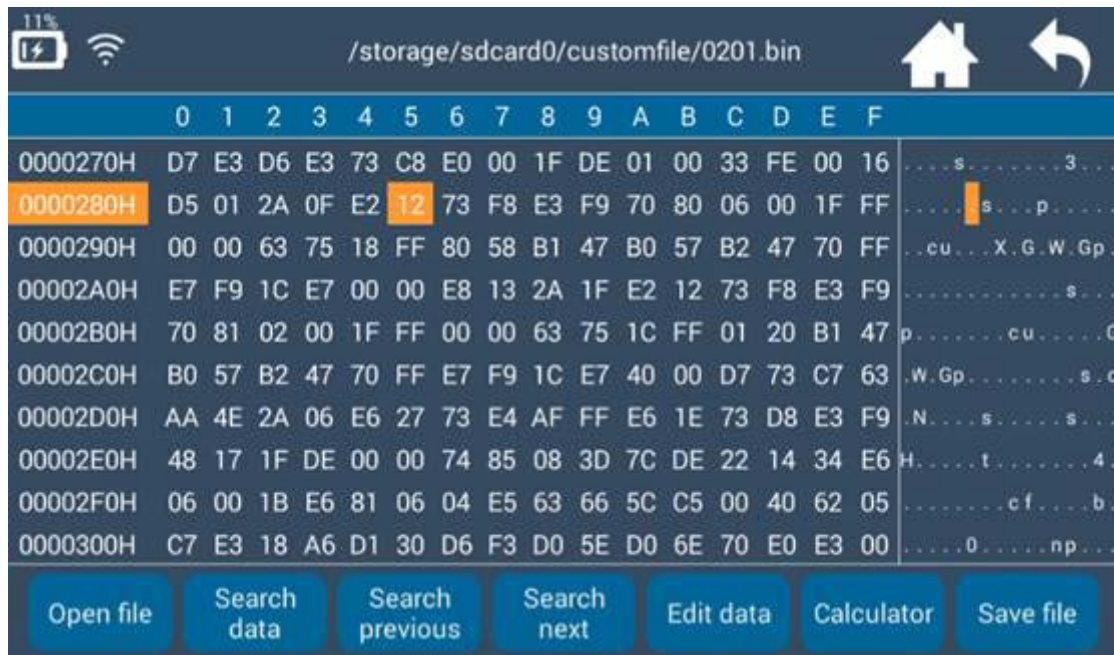
- ❖ Small keypad:  
Click number to input data.  
Click “←” to delete data.  
Click “close” to close the keypad.

- ❖ Stop searching data: Please click **【Cancel】** .
- ❖ Start to search data: please click **【Search】** , and the cursor will skip to corresponding data as shown below.



For example: If you input No. 12, and click **【Search】** . The data you’re searching is highlighted as shown below.

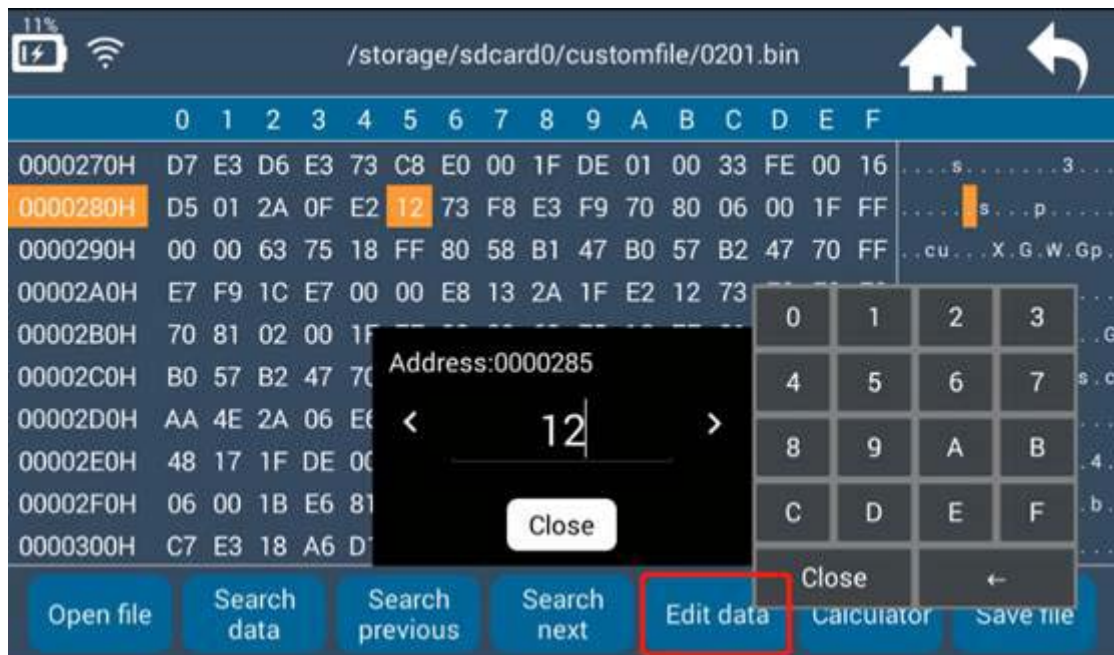




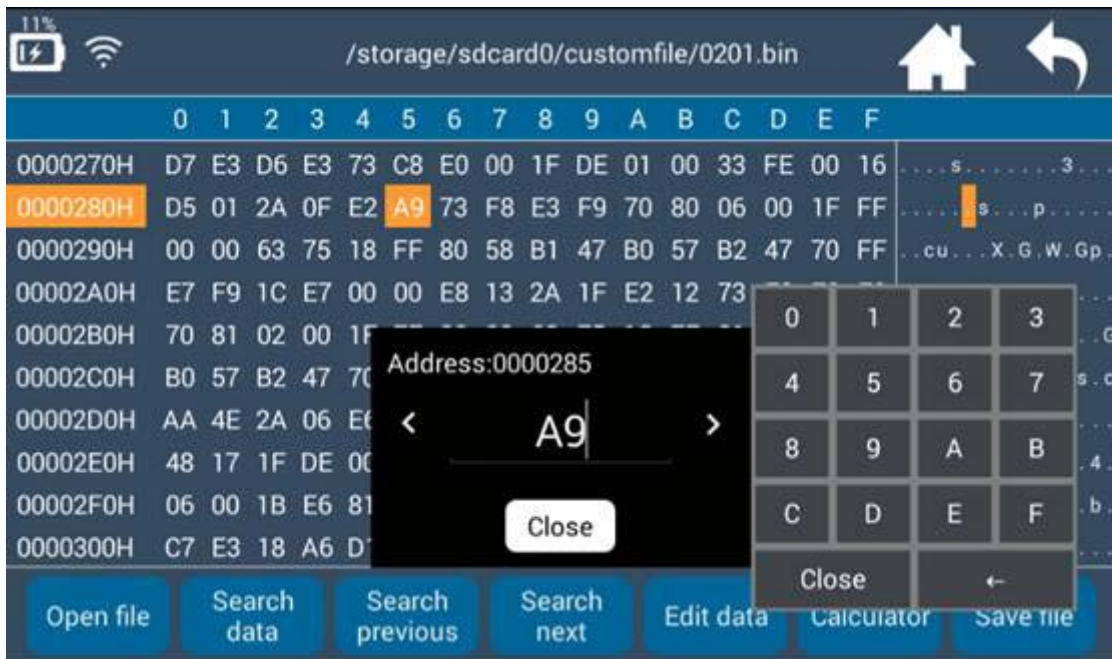
- ❖ After searching the data, **【Search previous】** and **【Search next】** buttons will turn to blue and clickable. Click **【Search previous】** or **【Search next】**, and you will find previous or next same data.

## 4 Edit data

- ❖ Revise a Hex number: Please search and find the number. Then click **【Edit data】** to revise it. For example, click to edit data when you find No. 12 (see below pic).

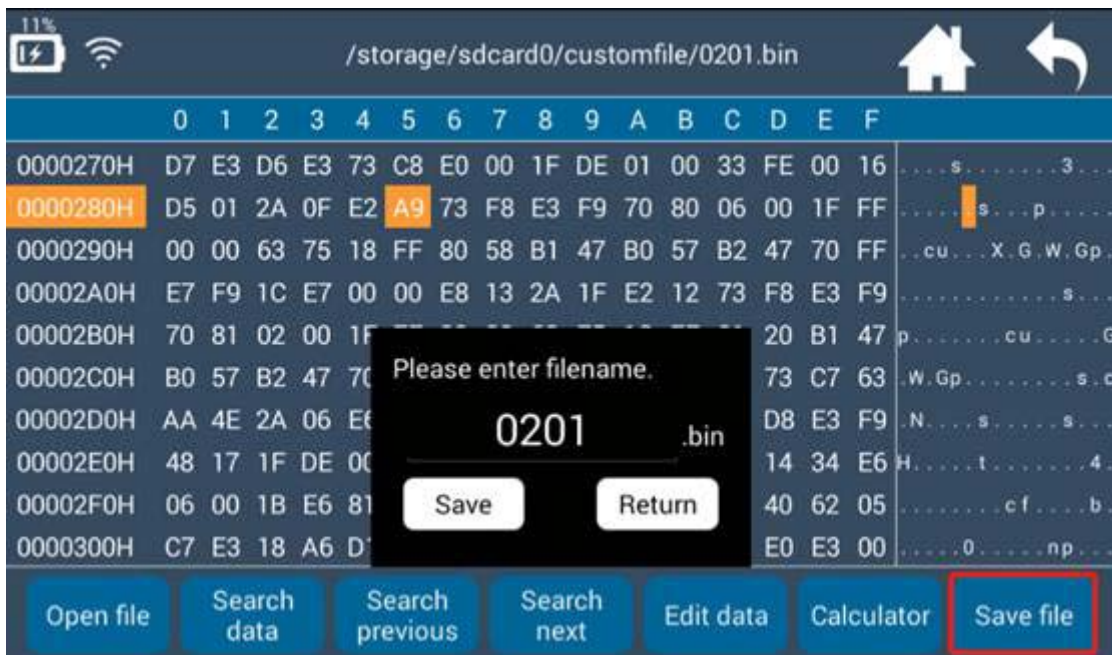


If you want to change the number to A9, please input A9 on small keypad directly. Then all the number will change to “A9” synchronously.



## 5 Save file

- ❖ How to save revised data: Click **【Save file】** to input filename and click **【Save】** .
- ❖ You can also return to home screen and select “not save”. The revised data will not be saved in this case. Click **【Save file】** as shown below.



- ❖ The filename defaults to be the one when it's open. If you need to revise the filename, click the prompt frame and input new filename and click **【Save】** . Refer to below pic.





## 6 Calculator

【Calculator】 includes two functions: SysConvert and XOR.

❖ SysConvert: Arbitrary conversion among Hex, Bin, Dec and Oct.

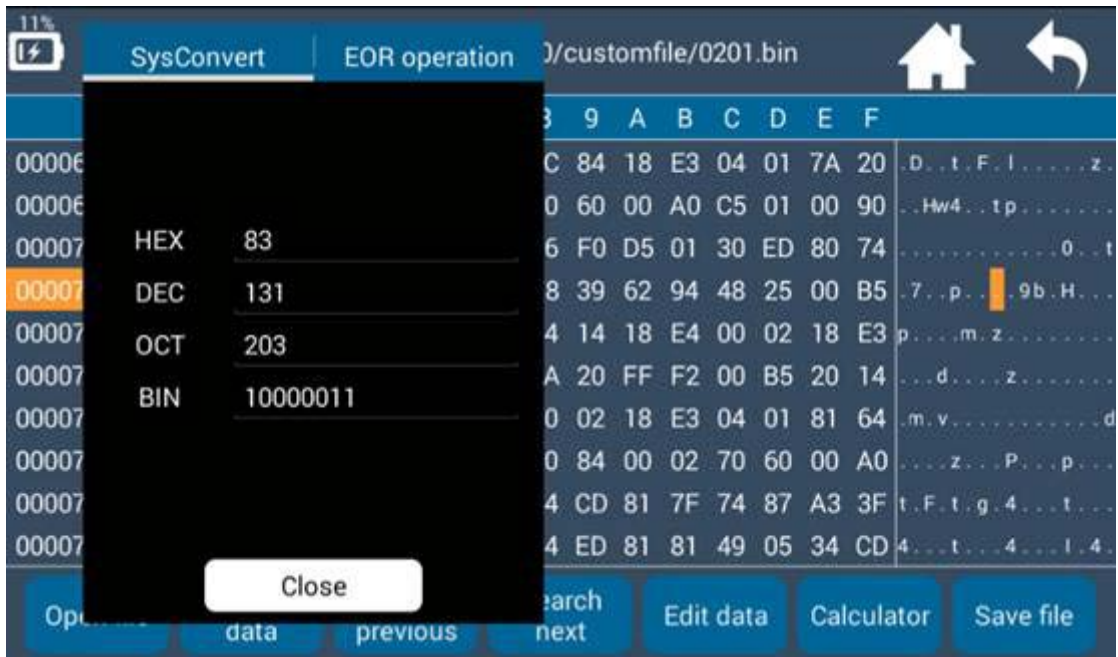
Click any number on the screen, and the number will be converted automatically.

For example, click “94”, the calculator will convert it to Bin, Dec and Oct numbers.

Refer to below pics.



Prompt frame can be moved around the screen.



You can also input data to convert it with small keypad, as shown below.



- ❖ For XOR, you need to input No.1 and 2 manually. The calculating result is as follows:

The screenshot shows the SysConvert application interface. The main window displays a hex dump with columns labeled 0 through A. The address 0000280H is highlighted in orange. A numeric keypad overlay is positioned over the hex dump, with a 'Close' button at the bottom. To the right, a dark overlay contains the XOR operation details: 'Digital1' is set to 83, 'Digital2' is set to AE, and the 'Result is: 2D'. A 'Close' button is located at the bottom of this overlay. The bottom of the application shows buttons for 'Open file', 'Search data', 'Search previous', and 'Search next'.

	0	1	2	3	4	5	6	7	8	9	A
0000270H	D7	E3	D6	E3	73	C8	E0	00	1F	DE	01
0000280H	D5	01	2A	0F							
0000290H	00	00	63	75							
00002A0H	E7	F9	1C	E7							
00002B0H	70	81	02	00							
00002C0H	B0	57	B2	47							
00002D0H	AA	4E	2A	06							
00002E0H	48	17	1F	DE							
00002F0H	06	00	1B	E6	81	06	04	E5	63	66	5C
0000300H	C7	E3	18	A6	D1	30	D6	F3	D0	5E	D0